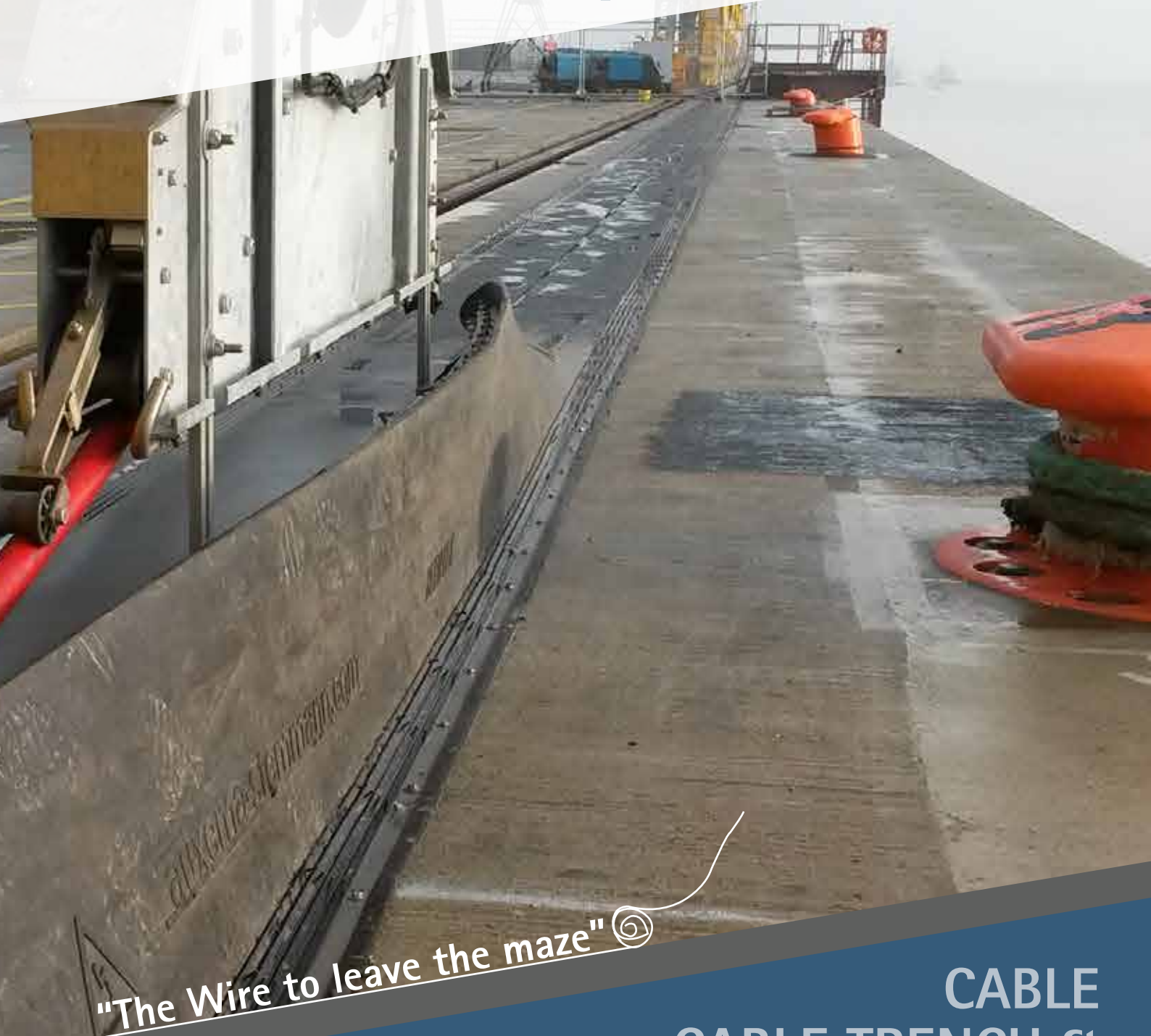





BELTflex system



"The Wire to leave the maze" 

**CABLE
CABLE TRENCH &
CONDUCTOR RAILS
PROTECTION SYSTEM**

high performing products for the most demanding applications



HIGH PERFORMANCE PRODUCTS FOR THE MOST DEMANDING APPLICATIONS

Auxema Stemmann is a leading company focused on the electrical feed and data transmission of the industrial mobile equipment, for more than 49 years.

All the efforts, reflected in the product range, are focused on improving the efficiency of the mobile equipment using electricity and creating the ecofriendliest industry.

Auxema Stemmann cable reels are specially designed for this purpose, offering greater results in terms of durability and prolonging the life of the cables, thanks to their high standard.

As mean of prolonging the cable life, Auxema Stemmann has designed and patented the *BELTflex* system; consisting in a cable trench cover composed of multiple layer of neoprene and a double metal frame.

When the trench is totally covered by *BELTflex*, the system protects the cable and the cable channel even against heavy road traffic, avoiding dangerous breaks in the cable and possible injuries to staff.

Specially recommended for shipyards, container terminals and general industries, it is used by several main ports and terminal operators worldwide.



channel cover solutions · rubber cover solutions · trench options · onsite assistance · additional accesories



channel cover solutions

THE "OLD SYSTEM"

i

Steel covers for the channels.
Only for slow speed cranes.
Noisy system.
Old fashioned system



Rubber cover solutions

BELTflex PROTECTION SYSTEM

The best protection system for cables that allows their correct fitting in the trench or channel, prolonging their life time.

Reinforced steel core flexible belt.

Prevents the accumulation of waste inside the trench

SAFETY: Avoids injuries and possible accidents to the staff.

Quick and easy installation.

Suitable for any cable guide.

Valid for modern and automatic machinery.

High visibility

B&Y SAFE!

All *BELTflex* references can be customized with vulcanized yellow lines as a precaution signal, under request.



BELTFLEX Rubber Cover Solution

DIMENSIONS & SPECIFICATIONS

Model	Reference	Measure
<i>BELTflex</i>	<i>BELTflex 300</i>	295 mm
	<i>BELTflex 400</i>	395 mm
	<i>BELTflex 500</i>	495 mm
	<i>BELTflex 600</i>	595 mm
<i>BELTflex XTRA</i>	<i>BELTflex XTRA300</i>	295 mm
	<i>BELTflex XTRA400</i>	395 mm
	<i>BELTflex XTRA500</i>	495 mm
	<i>BELTflex XTRA600</i>	595 mm
<i>BELTflex SUPER-XTRA</i>	<i>BELTflex SUPERXTRA300</i>	295 mm
	<i>BELTflex SUPERXTRA400</i>	395 mm
	<i>BELTflex SUPERXTRA500</i>	495 mm
	<i>BELTflex SUPERXTRA600</i>	595 mm
<i>BELTflex SUPER-XTRA-PLUS</i>	<i>BELTflex SUPERXTRAPLUS300</i>	295 mm
	<i>BELTflex SUPERXTRAPLUS400</i>	395 mm
	<i>BELTflex SUPERXTRAPLUS500</i>	495 mm
	<i>BELTflex SUPERXTRAPLUS600</i>	595 mm

Auxema Stemmann can customize sizes and measurements under customer's request





BELTflex-EXTRA Rubber Cover Solution

DIMENSIONS & SPECIFICATIONS

	<i>BELTflex</i>	<i>BELTflex-XTRA</i>	<i>BELTflex SUPER-XTRA</i>	<i>BELTflex-XTRA plus</i>
Description	Designed for Sea-Side. Very light traffic and pedestrian crossing.	Designed for occasional traffic and pedestrian crossing.	Designed for usual light traffic and occasional heavy traffic.	Designed for very intensive heavy traffic.
Thickness	≥ 15 mm	≥ 15 mm	≥ 15 mm	≥ 20 mm
Composition	80% CR Neopren 15% Steel cord 5% Dipped Nylon	75% CR Neopren 20% Steel cord 5% Dipped Nylon	72% CR Neopren 23% Steel cord 5% Dipped Nylon	50% CR Neopren 40% Steel cord 10% Dipped Nylon
Temperatura Range	-35°C up to +120°C -31°F up to 248°F	-35°C up to +120°C -31°F up to 248°F	-35°C up to +120°C -31°F up to 248°F	-35°C up to +120°C -31°F up to 248°F
Transversal Breaking Load	≥ 250 N/mm	≥ 500 N/mm	≥ 790 N/mm	≥ 790 N/mm
Longitudinal Breaking Load	≥ 100 N/mm	≥ 100 N/mm	≥ 500 N/mm	≥ 700 N/mm

Composition-Neoprene rubber specific formula for marine environments 65° SHORE

Opening angle	90	°
Estimated runtime	> 1.500.000	cycles
Hardness	62 ± 5	°Sh A
Abrasion	130	mm3
Breaking Elongation	400	%



Trench options

OUR ALTERNATIVE: CCG SYSTEM

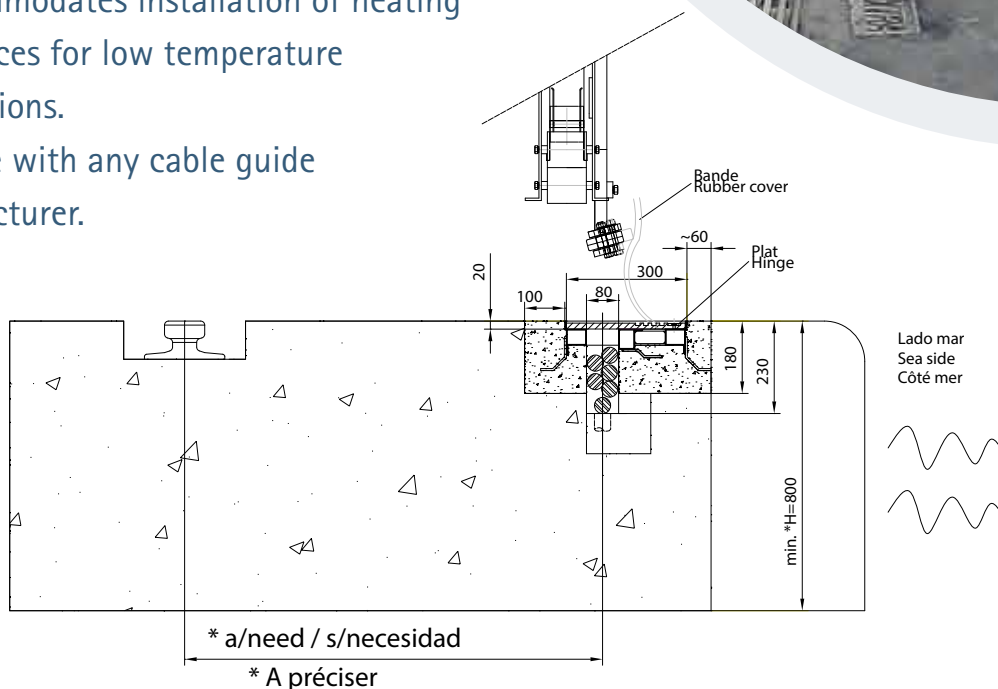
Lateral borders of electrowelded laminated profiles and/or tubes with fixings to be anchored to the concrete.

Material selection on demand: Hot dip galvanized or stainless steel.

Guides the cable into the concrete trench and reinforces the edges.

Advantages comparing to other systems:

- Easier to install and handle onsite.
- Quick implementation.
- Optimal adaptation to the dock.
- Accommodates installation of heating resistances for low temperature applications.
- Usable with any cable guide manufacturer.

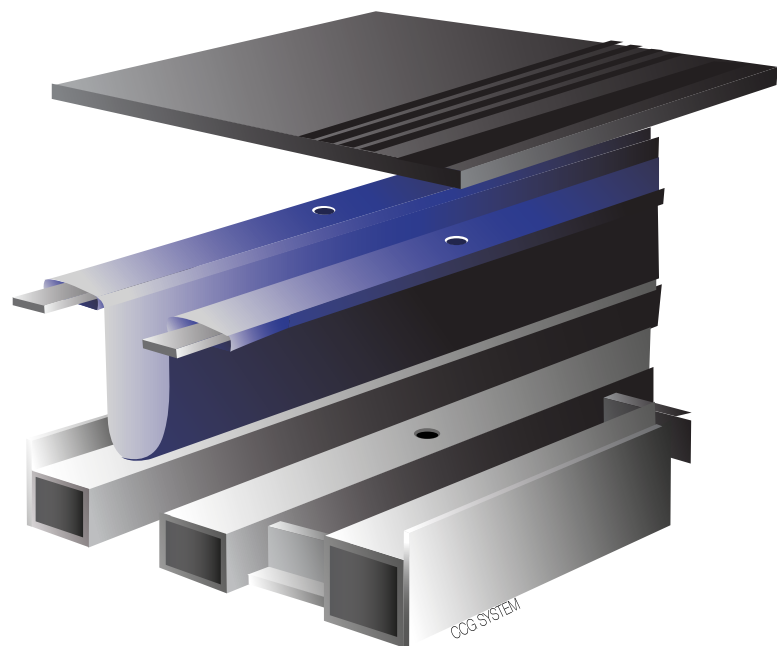


Trench options

SOKAbelt

This innovative system, consisted in a Polyurethane layer, avoids the contact of the cable against the concrete, prolonging the life time of the cable.

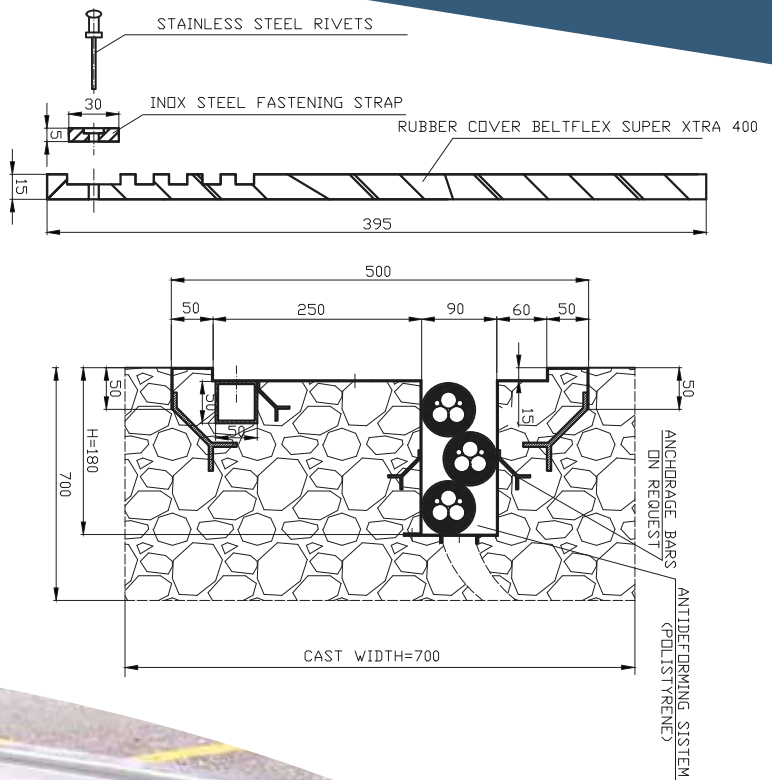
Property	Standard	Unit	Measure
Density	Calculated	g/cm ³	1.15
Softening range	TMA Onset- Endset internal method	°C	155-185
Hardness	DIN 53505	Shore A	87
Breaking strength	DIN EN ISO 527	MPa	60
Resistente to 50% elongation	DIN EN ISO 527	MPa	5-7
Elongation at brak	DIN EN ISO 527	%	550
Tear resistance	DIN ISO 34.1, B	kN/M	50
Sheet material	Polyurethane	m	Long. 6000 with On request
Strap material	Stainless steel 304L (316L on request)	m	Long. 6000 with 30



Trench options

STAINLESS STEEL OR HOT DIP GALVANIZED FULL CHANNEL

- Traditional application.
- Continuous full SS (AISI 304 or 316) or hot dip galvanized channel.
- Joints and fixing anchors are included.
- Copper joints and Polystyrene blocks used for alignment.
- Customization of the channel is available on request (n° of cables...)
- Suitable with the *BELTflex* system.



Trench options

NEW CABLE TRENCH GENERATION

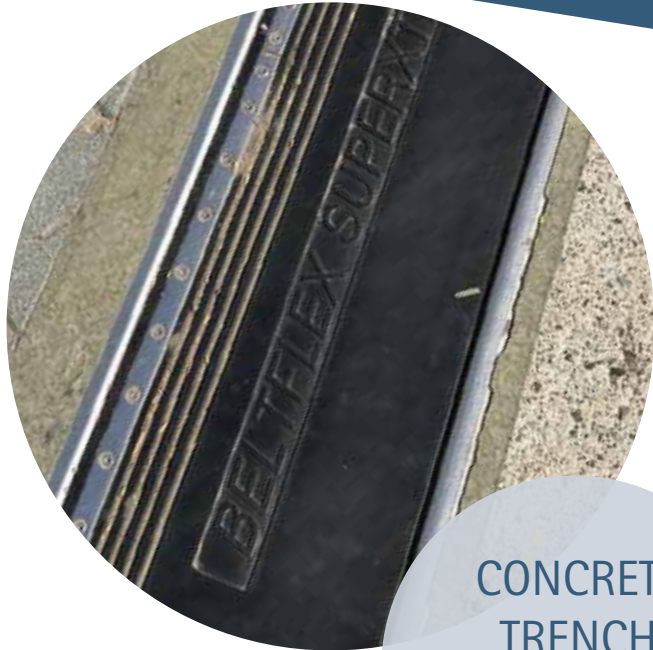
1. Complete inlaid piece, with no weldings. Supplied in lengths up to 6 meters, reduces the installation period in a 25-30%, being cost effective.

2. Reinforced area, in order to avoid any possible *BELTflex* connection bolt losing.

Thanks to this new manufacturing system we can get a more robust design, obtaining as a result an optimus anchoring surface.



Trench options



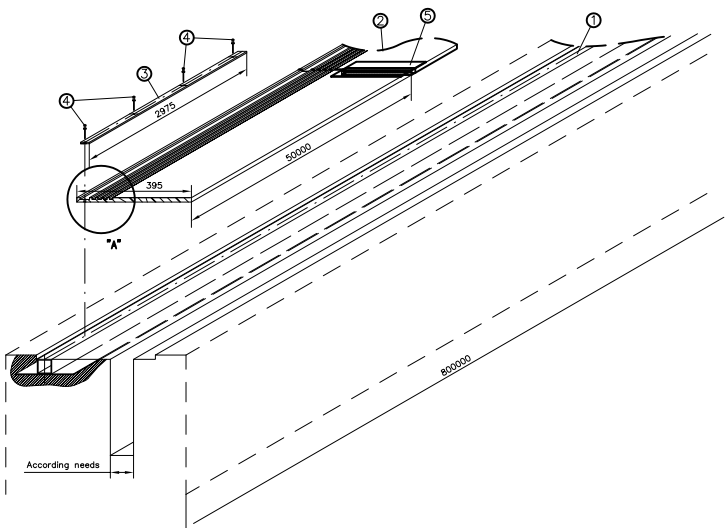
CONCRETE TRENCH WITH BELT FIXING DEVIDE



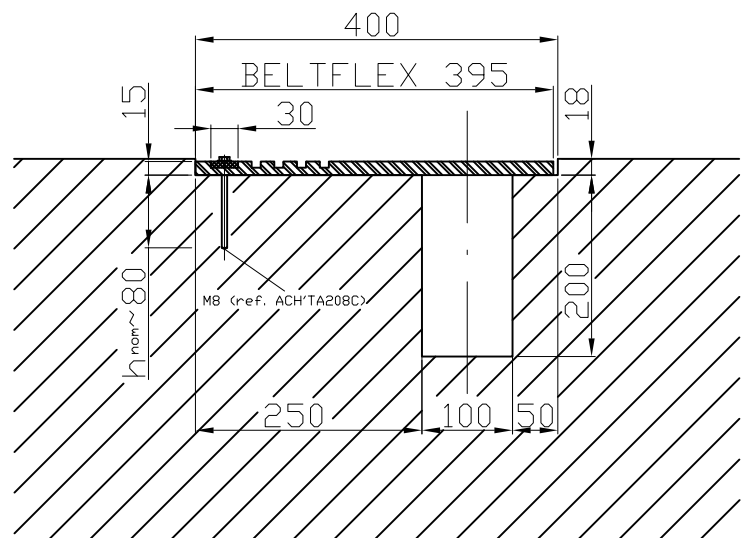
DIRECT CONECTION TO CONCRETE CHANNEL

- Trench made of pure concrete.

- Supplied with a *BELTflex* fixing asembly and anchor fixings.



- The belt is directly connected to the concrete channel with special bolts.



Onsite assistance

BELT LENGTH FIXING SYSTEMS

We have the possibility to offer two different options:

- Conventional system: The union of the different belt length is made with stainless steel coupling links
- Vulcanization: Using a special equipment, we join the different belt lengths, giving an uninterrupted run of the belt. With this system, we reduce the possibility of breaks in the belt, caused by the damaged coupling links.





UP YOUR TRENCH

We can propose and develop a totally customized solution for your old cable trench

Additional accessories

BELT LIFTERS

The belt lifter enables the perfect elevation of the rubber cover of the channel (*BELTflex System*) while the crane is operating. They are specially designed and manufactured depending on the channel and crane sizes. All our belt lifter are suitable with all channel and rubber cover manufacturers.



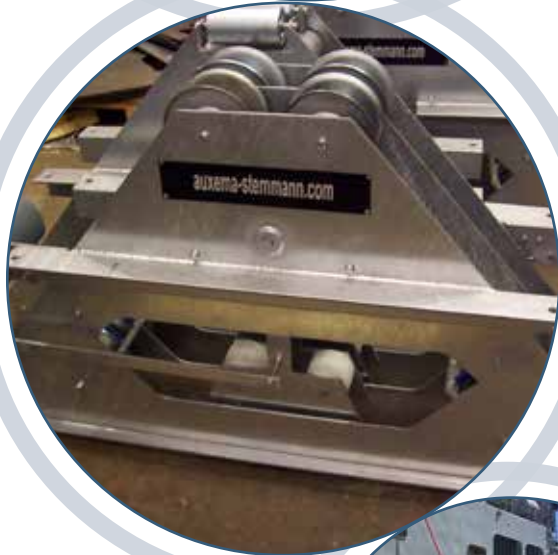
Additional accessories



SPECIAL CABLES

SOKAflex special cables are designed and manufactured under the most demanding standards for mobile applications.

Specific cables for high speed voltage and optic fibre are available



CABLE GUIDES

The cable guides ensure the correct location of the cable in the trench.



ELECTRICAL CONNECTORS

Feeding points, under the floor or on the top of it are available.

Additional accessories

SLIP RINGS



CABLE REELS



ENGINEERING -MANUFACTURING- TECHNICAL ADVIDE-TOTAL
INSTALLATION-COMMISSIONING SUPPORT-TRAINING





Auxema Stemmann S.L
Gazanda 3, 48100 Mungua-Vizcaya (Spain)
Tel. +34-946740362/ Fax.+34-946744859
E-mail: auxema@auxema-stemmann.com
www.auxema-stemmann.com

Smartox LLC
194017 St. Petersburg, Udelyny pr., 5A /38-H
Tel. +7-9219402244
E-mail: info@smartox.org
www.smartox.org

"The Wire to leave the maze" 