

ASSEMBLY INSTRUCTIONS

1) SECURITY

1.1 Advices about electricity

- Disconnect the power from the system before starting any assembly operation.
- Do not use electrical cables for higher loads than the specified voltage and current.

1.2 Operational advices

- Do not use different cables for which the festoon system is specified. Any change in number, diameter, weight, etc., may affect the normal operation of the cable system.

1.3 Maintenance advice

- The modification of the number and/or characteristics of the festoon system components cancels the warranty.

2) INSTALLATION

The support structure for the festoon system must be capable of supporting the total weight of the festoon system. Take into consideration that the supplied line is manufactured according to the dimensioned drawing from the customer. All the tracks (straight and curved) have connecting holes at both edges for installing the joints 2307-3 which allows assembling the complete track. Another holes are drilled on the track to allow the assembling of the supports 2307-4.

Place the tracks on the floor just under the beam. Tracks are numbered:

- The first track with - 1.
- The second track with 1 - 2.
- The third track with 2 - 3.
-

Assemble the supports 2307-4 on the first track and lift it near to the beam. Mark the place where the supporting arms have to be placed.

Assemble the supporting arms along the beam.

Supporting arms can be steel plates, steel angles or universal supports as follows:



UNIVERSAL SUPPORTS



Lift the tracks and fix the support 2307-4 on the corresponding support arm.

Tighten the screws of every support 2307-4.

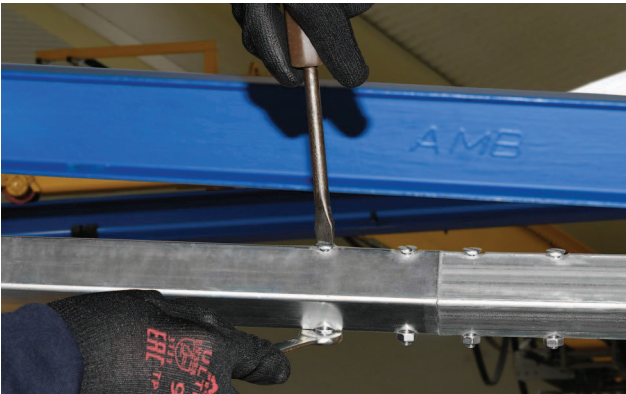


Assemble the joint 2307-3 on the required track edge.



FESTOON SYSTEM Series 2307

ASSEMBLY INSTRUCTIONS



Joint consecutive tracks in order to make a continuous track.
Tighten the screws of every joint.
Assemble supports 2307-4 where required.
Repeat the same operations for the restant tracks.
Check that the track is correctly in paralell with the beam.



Cut the necessary length of electrical cable leaving enough length on both sides to make the electrical connections later.
Make marks with white chalk on the cable in the required points, according to the height of the loop or number of trolleys to be assembled. Put the cables in the saddle (biggest cables should be mounted on top of the cable package).



Tighten the screws of the cable holders avoiding damaging the cables due to excessive tightening.
The cable package should be as centered as possible on the cable holder, so that the trolley runs in a balanced way.
Make sure that the smallest cables do not slip into the cable package.



Insert the festoon system into the profile, starting first with the towing trolley and then following the cable trolleys. Insert the end clamp the last. The cables must be mounted without any rotation.
Tighten the end clamp at the end of the profile.
Make the connections of the cables on both sides of the system in their respective connection boxes.

3) OPERATION

3.1 Previous tests

Carry out several travels by hand to check that it moves throughout its length without problems.
Check that there is plenty of space in the ambush area.
Check that the cable loops don't get hooked in any part of the travel.
In the cable management system, check the correct height between the pushbutton pendant control station and the floor.

3.2 Final tests

Once the electric current is connected, check that the trolleys move forward and backward without problems.
Check that the device the festoon system is powered on, works correctly.

3.3 Normal functioning

Do not exceed the maximum voltage and / or amperage specified for the electric cables.
Use the festoon system within its corresponding electrical and / or mechanical specifications.

4) MAINTENANCE

Perform periodic maintenance tasks to ensure the status of the festoon system. The maintenance operations will depend on the use given to the system.

During each inspection the following points should be checked:

- Wear of ball bearings.
- Ensure screws are correctly tightened.
- Separation or alignment in the joints.
- Electric cables: cuts, cracks, etc...
- The profile must be clean in the running edges.